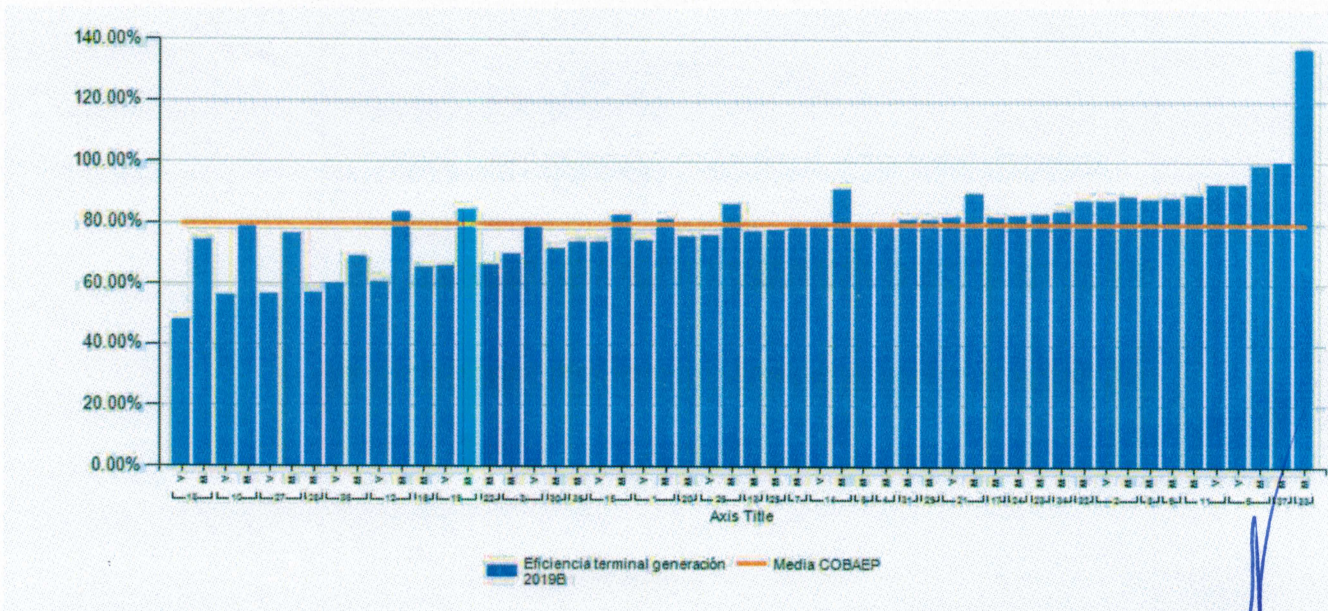
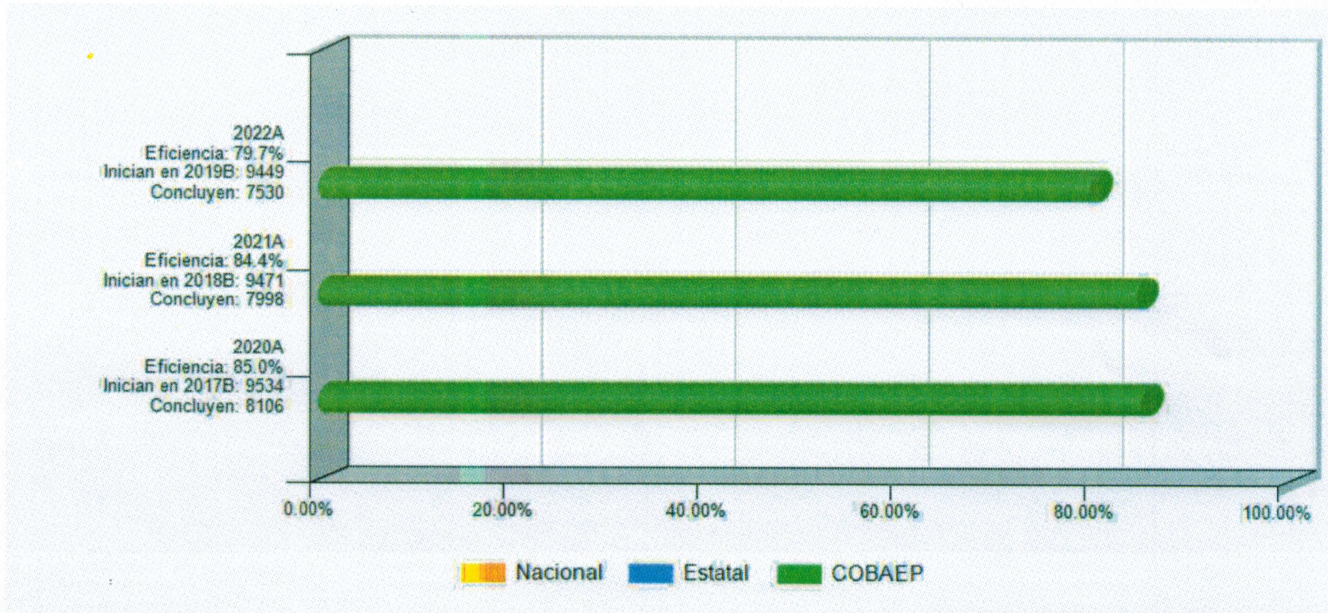


COLEGIO DE BACHILLERES DEL ESTADO DE PUEBLA

Organismo Público Descentralizado

Eficiencia Terminal



[Handwritten signature]

COLEGIO DE BACHILLERES DEL ESTADO DE PUEBLA

Organismo Público Descentralizado

Plantel	Nombre Corto	Turno	Matricula Inicial 2019B	Existencia 2022A	Indicador
18	Xalmimilulco	V	44	21	47.7%
10	Huauchinango	V	48	27	56.3%
27	Zaragoza	V	53	30	56.6%
28	Atlixco	M	152	87	57.2%
36	Villa Frontera	V	108	65	60.2%
12	I. Metamoros	V	126	76	60.3%
16	Tlachichuca	M	184	120	65.2%
19	Acatzingo	V	227	149	65.6%
22	Cd. Serdán	M	186	123	66.1%
36	Villa Frontera	M	160	110	68.8%
3	San Jerónimo C.	M	265	185	69.8%
30	Tlacotepec	M	145	104	71.7%
35	Chichotla	M	95	70	73.7%
15	Rivera Anaya	V	229	169	73.8%
1	Totimehuacan	V	255	189	74.1%
18	Xalmimilulco	M	226	168	74.3%
20	Romero Vargas	M	266	201	75.6%
26	Chachapa	V	237	180	75.9%
27	Zaragoza	M	181	138	76.2%
13	Xoxitla	M	201	155	77.1%
25	Libres	M	240	186	77.5%
3	San Jerónimo C.	V	266	209	78.6%
7	Chiautla	M	89	70	78.7%
14	La Margarita	V	209	165	78.9%
6	Ixcaquixtla	M	199	158	79.4%
10	Huauchinango	M	264	210	79.5%
4	Tecali	M	170	136	80.0%

COLEGIO DE BACHILLERES DEL ESTADO DE PUEBLA

Organismo Público Descentralizado

1	Totimehuacan	M	297	241	81.1%
31	Zacaola	M	85	69	81.2%
29	Tetela	M	96	78	81.3%
21	Loma Bella	V	257	211	82.1%
17	Tlaltlauquitepec	M	224	184	82.1%
24	Zapotitlán	M	80	66	82.5%
15	Rivera Anaya	M	252	208	82.5%
23	Zacatlán	M	278	230	82.7%
12	I. Matamoros	M	184	137	83.5%
34	Acateno	M	25	21	84.0%
19	Acazingo	M	244	206	84.4%
26	Chachapa	M	245	211	86.1%
32	Coltzingo	M	95	83	87.4%
2	Angelópolis	V	136	119	87.5%
6	Tehuacán	M	352	309	87.8%
9	Teztlitlán	M	143	126	88.1%
2	Angelópolis	M	286	254	88.8%
11	Xicotepéc	M	202	180	89.1%
21	Loma Bella	M	273	245	89.7%
14	La Margarita	M	190	173	91.1%
11	Xicotepéc	V	192	178	92.7%
5	Sn. Martín Tex.	V	206	191	92.7%
5	Sn. Martín Tex.	M	230	227	98.7%
37	Atempan	M	45	45	100.0%
33	Pahuatlán	M	27	37	137.0%
TOTAL			9449	7530	79.7%