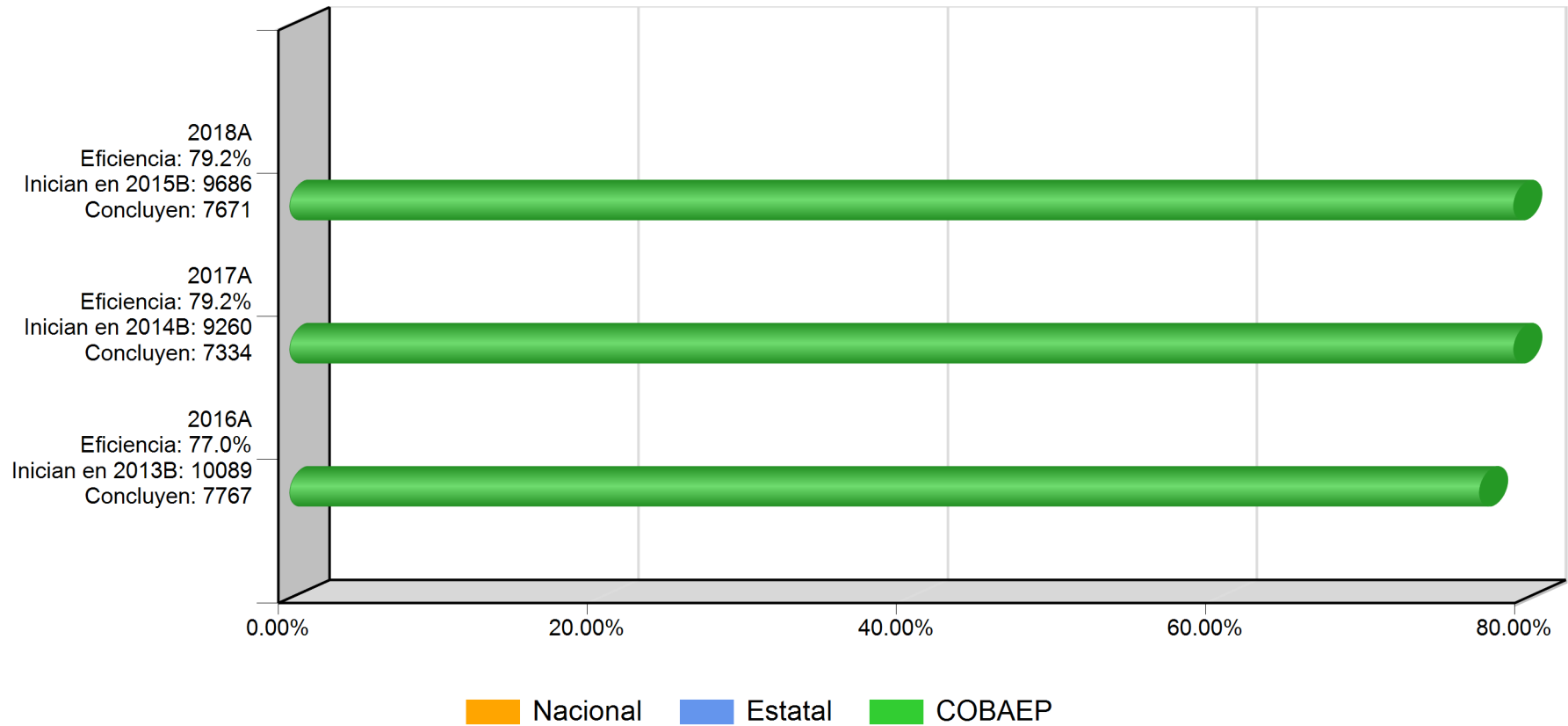
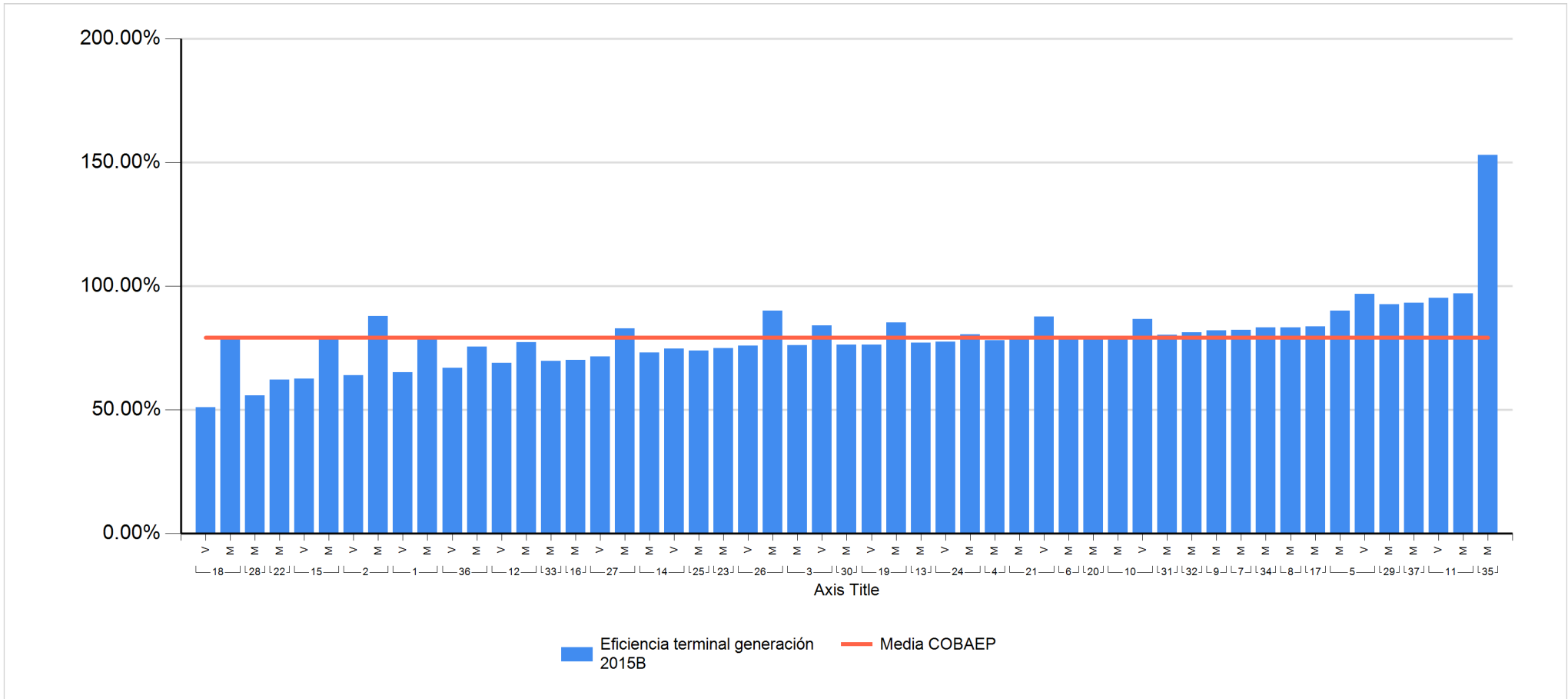


13. EFICIENCIA TERMINAL 2018A



13. EFICIENCIA TERMINAL 2018A



13. EFICIENCIA TERMINAL 2018A

Plantel	Nombre Corto	Turno	Matrícula Inicial 2015B	Existencia 2018A	Indicador
18	Xalmimilulco	V	51	26	51.0%
28	Atlixco	M	154	86	55.8%
22	Cd. Serdán	M	169	105	62.1%
15	Rivera Anaya	V	262	164	62.6%
2	Angelópolis	V	202	129	63.9%
1	Totimehuacan	V	284	185	65.1%
36	Villa Frontera	V	94	63	67.0%
12	I. Matamoros	V	161	111	68.9%
33	Pahuatlán	M	43	30	69.8%
16	Tlachichuca	M	211	148	70.1%
27	Zaragoza	V	35	25	71.4%
14	La Margarita	M	190	139	73.2%
25	Libres	M	256	189	73.8%
14	La Margarita	V	197	147	74.6%
23	Zacatlán	M	306	229	74.8%
36	Villa Frontera	M	106	80	75.5%
26	Chachapa	V	224	170	75.9%
3	San Jerónimo C.	M	264	201	76.1%
30	Tlacotepec	M	143	109	76.2%
19	Acatzingo	V	220	168	76.4%
13	Xoxtla	M	201	155	77.1%
12	I. Matamoros	M	190	147	77.4%
24	Zapotitlán	V	40	31	77.5%
4	Tecali	M	165	129	78.2%

13. EFICIENCIA TERMINAL 2018A

18	Xalmimilulco	M	239	187	78.2%
21	Loma Bella	M	300	236	78.7%
6	Ixcaquixtla	M	231	182	78.8%
1	Totimehuacan	M	296	235	79.4%
20	Romero Vargas	M	261	208	79.7%
10	Huauhinango	M	242	193	79.8%
15	Rivera Anaya	M	254	203	79.9%
31	Zacaola	M	96	77	80.2%
24	Zapotitlán	M	41	33	80.5%
32	Coltzingo	M	102	83	81.4%
9	Teziutlán	M	178	146	82.0%
7	Chiautla	M	96	79	82.3%
27	Zaragoza	M	187	155	82.9%
34	Acateno	M	24	20	83.3%
8	Tehuacán	M	318	265	83.3%
17	Tlatlauquitepec	M	275	230	83.6%
3	San Jerónimo C.	V	263	221	84.0%
19	Acatzingo	M	250	213	85.2%
10	Huauhinango	V	30	26	86.7%
21	Loma Bella	V	284	249	87.7%
2	Angelópolis	M	282	248	87.9%
5	Sn. Martín Tex.	M	242	218	90.1%
26	Chachapa	M	233	210	90.1%
29	Tetela	M	94	87	92.6%
37	Atempan	M	44	41	93.2%
11	Xicotepec	V	208	198	95.2%

13. EFICIENCIA TERMINAL 2018A

5	Sn. Martín Tex.	V	191	185	96.9%
11	Xicotepec	M	208	202	97.1%
35	Chilchotla	M	49	75	153.1%
TOTAL			9686	7671	79.2%