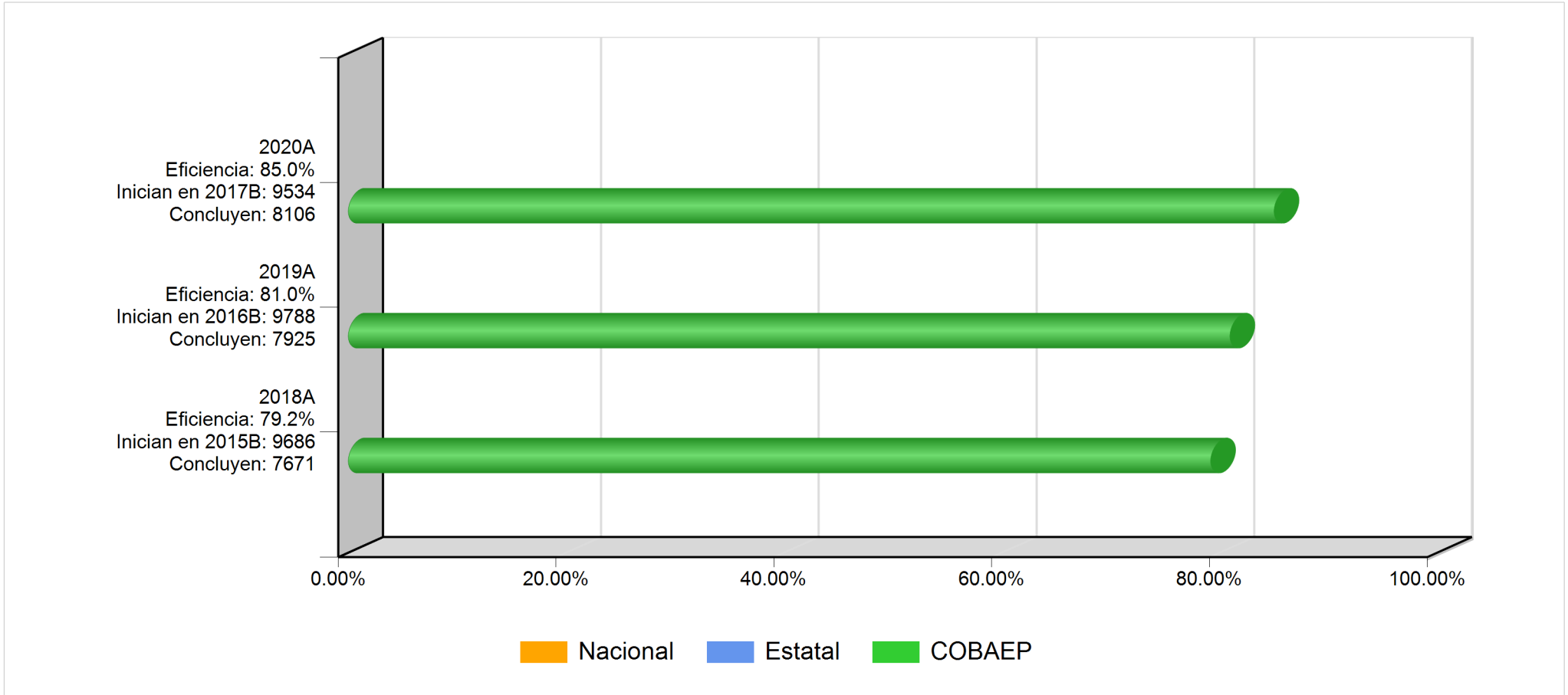
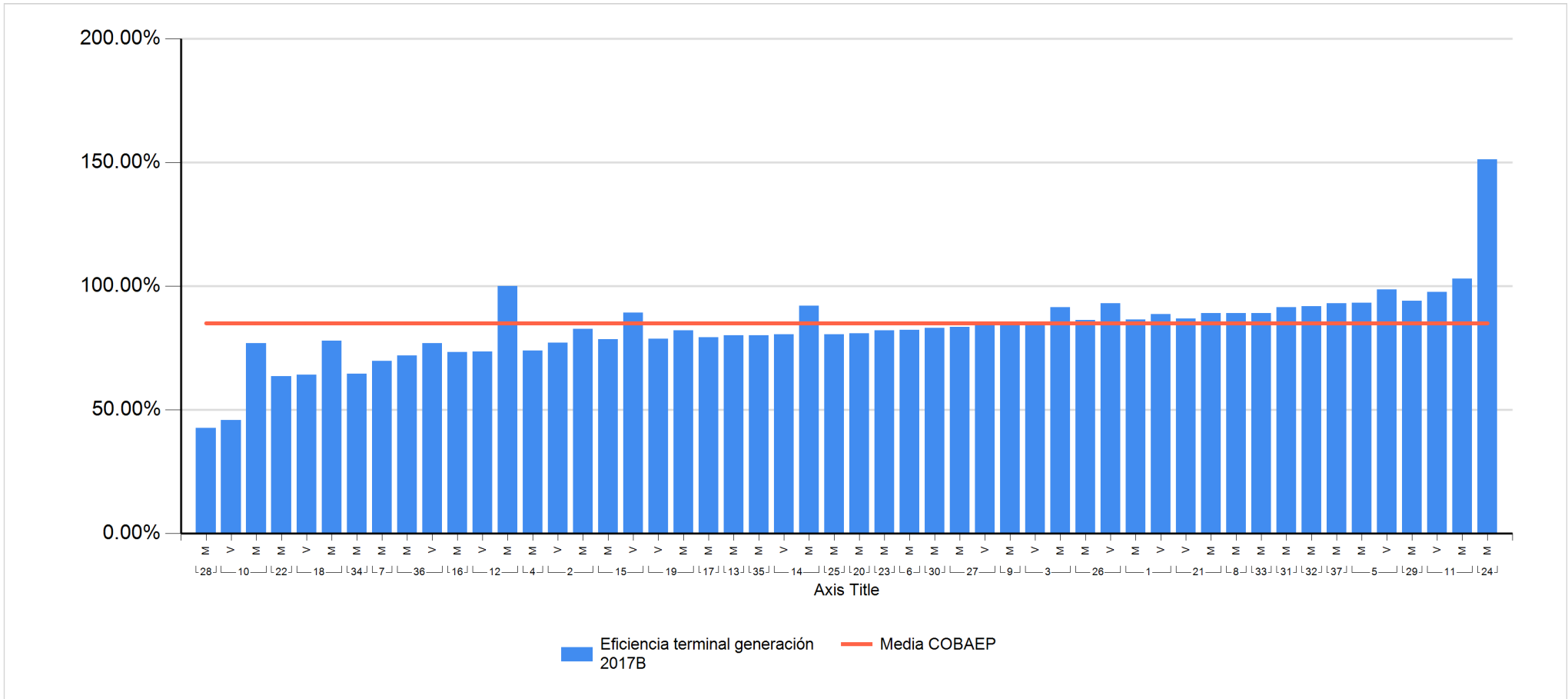


13. EFICIENCIA TERMINAL 2020A



13. EFICIENCIA TERMINAL 2020A



13. EFICIENCIA TERMINAL 2020A

Plantel	Nombre Corto	Turno	Matrícula Inicial 2017B	Existencia 2020A	Indicador
28	Atlixco	M	150	64	42.7%
10	Huauchinango	V	48	22	45.8%
22	Cd. Serdán	M	200	127	63.5%
18	Xalmimilulco	V	39	25	64.1%
34	Acateno	M	31	20	64.5%
7	Chiautla	M	106	74	69.8%
36	Villa Frontera	M	150	108	72.0%
16	Tlachichuca	M	217	159	73.3%
12	I. Matamoros	V	128	94	73.4%
4	Tecali	M	176	130	73.9%
36	Villa Frontera	V	91	70	76.9%
10	Huauchinango	M	317	244	77.0%
2	Angelópolis	V	196	151	77.0%
18	Xalmimilulco	M	245	191	78.0%
15	Rivera Anaya	M	233	183	78.5%
19	Acatzingo	V	234	184	78.6%
17	Tlatlauquitepec	M	257	204	79.4%
13	Xoxtla	M	201	161	80.1%
35	Chilchotla	M	106	85	80.2%
14	La Margarita	V	194	156	80.4%
25	Libres	M	257	207	80.5%
20	Romero Vargas	M	245	198	80.8%
19	Acatzingo	M	246	202	82.1%
23	Zacatlán	M	269	221	82.2%

13. EFICIENCIA TERMINAL 2020A

6	Ixcaquixtla	M	247	203	82.2%
2	Angelópolis	M	294	243	82.7%
30	Tlacotepec	M	159	132	83.0%
27	Zaragoza	M	193	161	83.4%
9	Teziutlán	M	178	150	84.3%
27	Zaragoza	V	51	43	84.3%
3	San Jerónimo C.	V	260	221	85.0%
26	Chachapa	M	218	188	86.2%
1	Totimehuacan	M	259	224	86.5%
21	Loma Bella	V	274	238	86.9%
1	Totimehuacan	V	221	196	88.7%
8	Tehuacán	M	329	293	89.1%
33	Pahuatlán	M	55	49	89.1%
21	Loma Bella	M	267	238	89.1%
15	Rivera Anaya	V	240	214	89.2%
31	Zacaola	M	81	74	91.4%
3	San Jerónimo C.	M	255	233	91.4%
32	Coltzingo	M	98	90	91.8%
14	La Margarita	M	188	173	92.0%
26	Chachapa	V	215	200	93.0%
37	Atempan	M	43	40	93.0%
5	Sn. Martín Tex.	M	298	278	93.3%
29	Tetela	M	102	96	94.1%
11	Xicotepec	V	204	199	97.5%
5	Sn. Martín Tex.	V	225	222	98.7%
12	I. Matamoros	M	0	156	100.0%



13. EFICIENCIA TERMINAL 2020A

11	Xicoteppec	M	201	207	103.0%
24	Zapotitlán	M	43	65	151.2%
TOTAL			9534	8106	85.0%