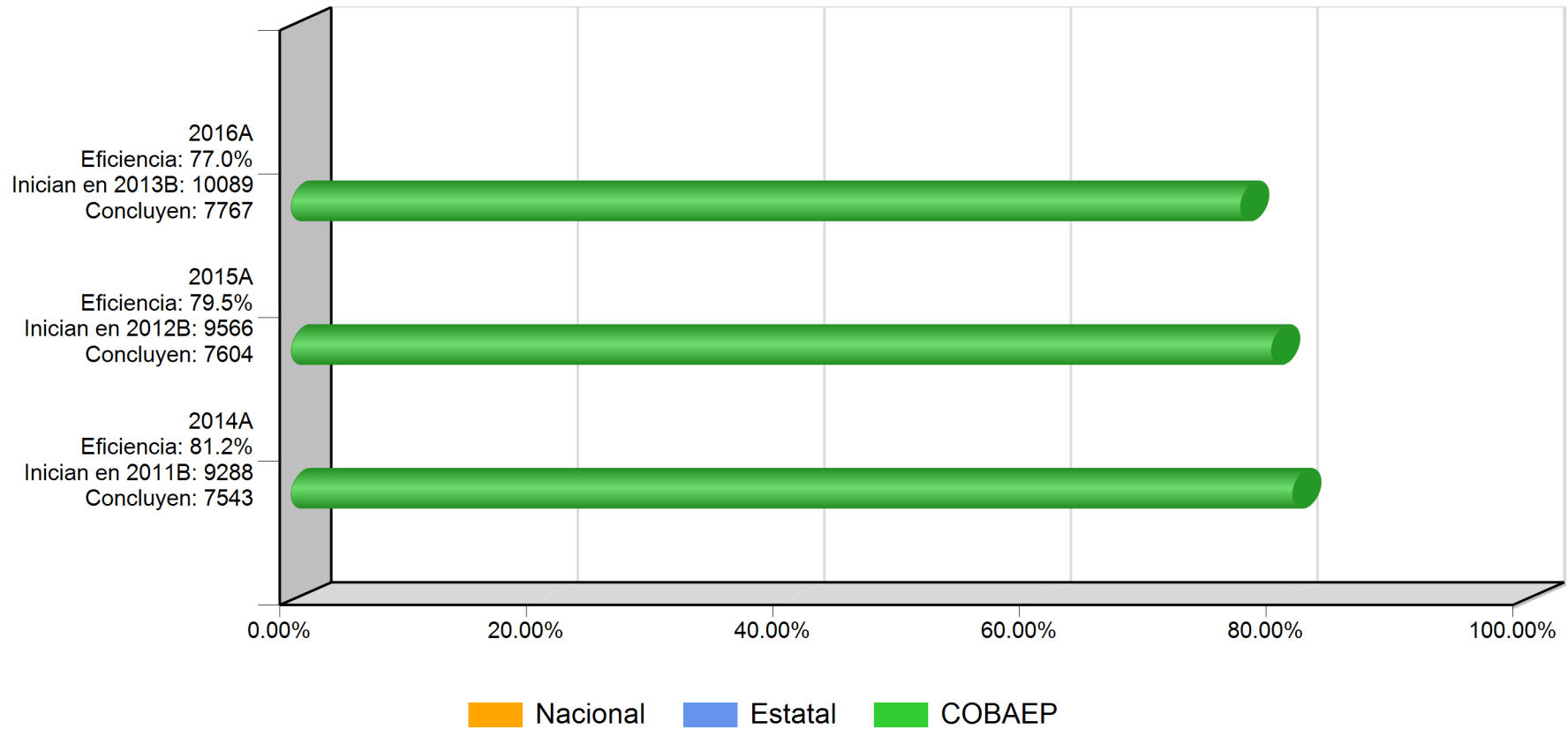
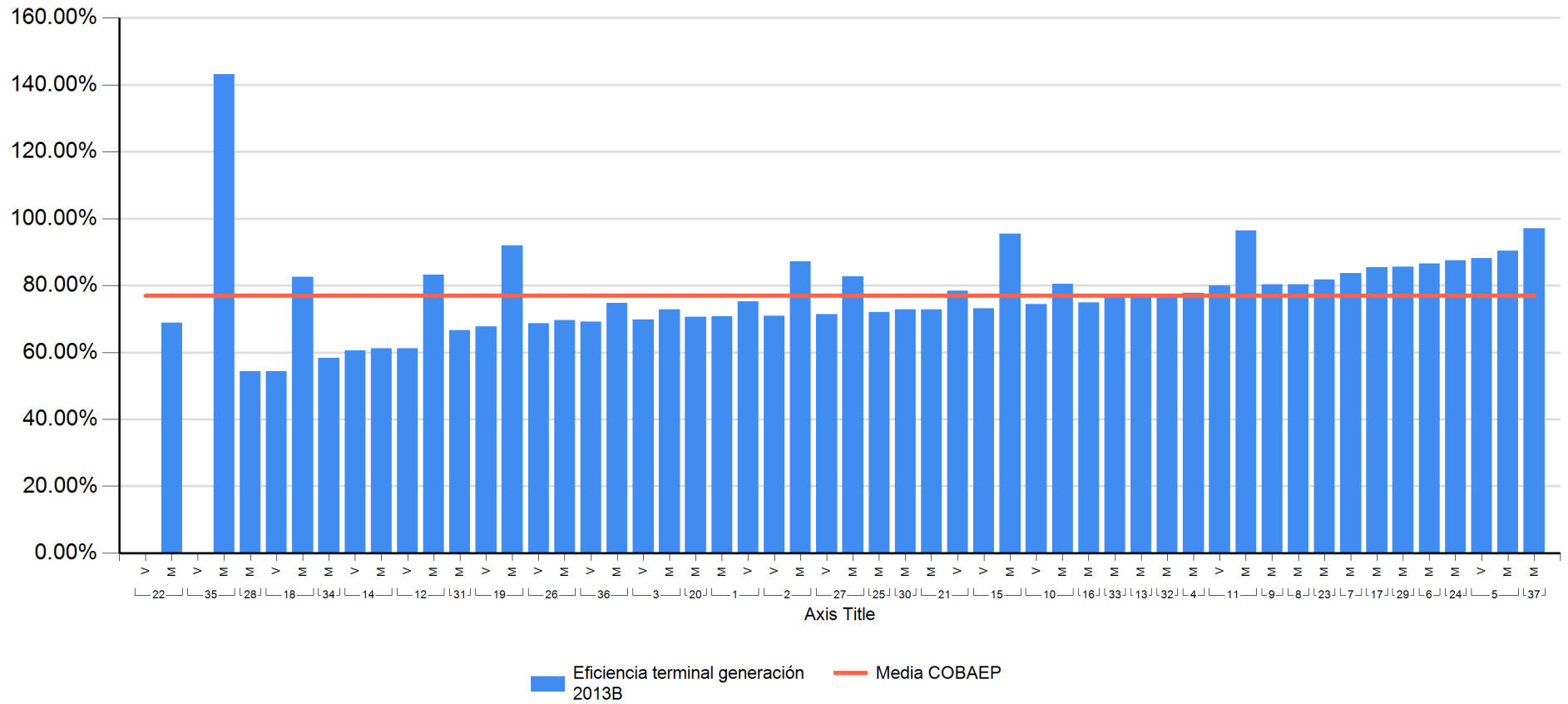


13. EFICIENCIA TERMINAL 2016A



13. EFICIENCIA TERMINAL 2016A



13. EFICIENCIA TERMINAL 2016A

Plantel	Nombre Corto	Turno	Matrícula Inicial 2013B	Existencia 2016A	Indicador
22	Cd. Serdán	V	14	0	0.0%
35	Chilchotla	V	25	0	0.0%
28	Atlixco	M	171	93	54.4%
18	Xalmimilulco	V	57	31	54.4%
34	Acateno	M	24	14	58.3%
14	La Margarita	V	208	126	60.6%
14	La Margarita	M	214	131	61.2%
12	I. Matamoros	V	178	109	61.2%
31	Zacaola	M	87	58	66.7%
19	Acatzingo	V	205	139	67.8%
26	Chachapa	V	240	165	68.8%
22	Cd. Serdán	M	173	119	68.8%
36	Villa Frontera	V	104	72	69.2%
26	Chachapa	M	254	177	69.7%
3	San Jerónimo C.	V	271	189	69.7%
20	Romero Vargas	M	276	195	70.7%
1	Totimehuacan	M	288	204	70.8%
2	Angelópolis	V	169	120	71.0%
27	Zaragoza	V	28	20	71.4%
25	Libres	M	314	226	72.0%
3	San Jerónimo C.	M	276	201	72.8%
30	Tlacotepec	M	162	118	72.8%
21	Loma Bella	M	328	239	72.9%
15	Rivera Anaya	V	250	183	73.2%

13. EFICIENCIA TERMINAL 2016A

10	Huauchinango	V	43	32	74.4%
36	Villa Frontera	M	162	121	74.7%
16	Tlachichuca	M	175	131	74.9%
1	Totimehuacan	V	266	200	75.2%
33	Pahuatlán	M	47	36	76.6%
13	Xoxtla	M	221	171	77.4%
32	Coltzingo	M	115	89	77.4%
4	Tecali	M	171	133	77.8%
21	Loma Bella	V	351	275	78.3%
11	Xicotepec	V	221	177	80.1%
9	Teziutlán	M	142	114	80.3%
8	Tehuacán	M	315	253	80.3%
10	Huauchinango	M	308	248	80.5%
23	Zacatlán	M	307	251	81.8%
18	Xalmimilulco	M	240	198	82.5%
27	Zaragoza	M	174	144	82.8%
12	I. Matamoros	M	208	173	83.2%
7	Chiautla	M	92	77	83.7%
17	Tlatlauquitepec	M	248	212	85.5%
29	Tetela	M	125	107	85.6%
6	Ixcaquixtla	M	215	186	86.5%
2	Angelópolis	M	266	232	87.2%
24	Zapotitlán	M	56	49	87.5%
5	Sn. Martín Tex.	V	261	230	88.1%
5	Sn. Martín Tex.	M	268	242	90.3%
19	Acatzingo	M	213	196	92.0%

13. EFICIENCIA TERMINAL 2016A

15	Rivera Anaya	M	263	251	95.4%
11	Xicotepec	M	221	213	96.4%
37	Atempan	M	35	34	97.1%
35	Chilchotla	M	44	63	143.2%
TOTAL			10089	7767	77.0%